

## QuickBooks Interface Version 2

- Completely revamped interface and routines
- Transfers data from all supported registers in Version 6 Polling with a few simple clicks
- Interfaces with QuickBooks 5, 6, 99, 2000 - 2007 and Standard, Pro and Premier versions
- Help files detailing every screen
- Instructional Wizards to guide users through setup and daily maintenance
- Built-in log tracking for additional security and troubleshooting assistance
- Auto transfer routine for most configurations
- Users have the ability to create a QuickBooks item file from the register item PLU file
- Transfers register data from PLU, transaction/financial, group/department, and employee time reports



## Version 6 Archive Agent

- Archive Agent interfaces with all V6 Polling registers
- V6 Archive Agent is a program to help V6 Polling users more effectively manage their data files
- Allows users to Archive, Restore, and Delete files from their polling directories
- Allows users to view previously created archives
- Data is compressed and stored in Zip files
- Easy to use Help Files
- User friendly interface
- All options process quickly and are easy to execute



Download a DEMO from the web today!

Archive Agent



Inventory



V6 Polling



V7 Polling &  
Inventory



DenView500



PC/Capture



QuickBooks



Interface

[www.pcpoll.com](http://www.pcpoll.com)

## DenView500

Is an ingredient view of sales that bridges the gap between polling and a full-blown inventory system

### General Features:

- ◆ Allows users to take previously collected polling reports and calculate the usage on assembled items
- ◆ Allows business owners to manage their businesses at a fraction of the cost of a high-end inventory module
- ◆ Basic stock tracking also included
- ◆ Can be applied to many kinds of stores including restaurants and bars

### PC/POLL SYSTEMS

3162 Cedar Crest Ridge  
Dubuque, IA 52003

Phone: (563) 556-2323

Fax: (563) 556-0405

Email: [sales2007@pcpoll.com](mailto:sales2007@pcpoll.com)



## PC/POLL SYSTEMS

Point of Sale Communications Software

## PC/POLL SYSTEMS Software for

# TEC

MA 1535

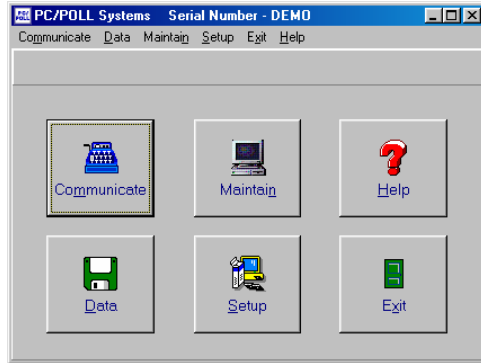


### Other PC/POLL SYSTEMS Products

Archive Agent  
DenView500  
Inventory  
PC/Capture  
Polling  
QuickBooks Interface

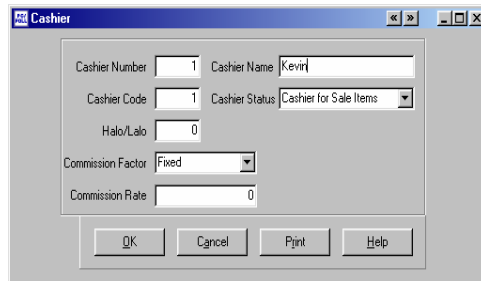
## Features of Version 6 Polling

- Save and Send Programs
- Poll Reports
- Communicates direct connect or via modem
- Built in help files
- Users can setup the software to be completely manual to fully automatic using the prompted, script, schedule, and calendar
- Allows users to generate their own end of week and month reports using the consolidate feature
- Allows users to save programs back to their PC from the register, make changes at the PC and then send those changes to the register
- Allows users to take X and Z reports from their PC and save the data for later viewing and easy storage
- Several different report export formats to choose from for interfacing purposes
- Data can be exported from both the report and programming area in comma delimited text file format and select additional formats
- Users can save and edit their keyboard layouts and then send those changes to the register. In addition to the programming, they can also create an overlay with color buttons, color text or icons which can be printed out to place on the register
- Includes options for auto report exporting and printing
- Interfaces with Archive Agent, DenView500, Version 6 Inventory and



**Main Screen:**  
This is the main menu screen. From here users can enter the different areas of the program.

**Cashier Detail Screen:** This is the detail screen of the Cashier program. This lets you easily set-up and make changes to the Cashier program.



## Version 6 Polling Reports

- Poll both Daily and Periodic Reports
- Poll both X and Z Reports
- Store reports on computer for later retrieval
- View and print reports with Zero Skip on or off
- Consolidate reports taken over a range of time
- Print reports
- Export reports in RTF, Excel, or HTML formats
- Automatically export and/or print any report
- Reports available include:

- PLU
- Department
- Cashier
- Financial
- Daily
- Plus Many More

| PLU #    | Description  | Group Name | Stock Count | Total Count | Total Amount |
|----------|--------------|------------|-------------|-------------|--------------|
| 1        | Yog. 8oz     | Sandwiches | 0           | 11          | \$67.89      |
| 2        | Ham Steak    | Sandwiches | 0           | 23          | \$37.50      |
| 4        | Turkey Steak | Sandwiches | 0           | 9           | \$26.91      |
| 23       | Coffee       | Drinks     | 0           | 3           | \$1.50       |
| 2322     | Pepsi        | Drinks     | 0           | 11          | \$11.50      |
| 2645     | Coke         | Drinks     | 0           | 10          | \$10.75      |
| 14254    | Ham & Cheese | Sandwiches | 0           | 6           | \$18.00      |
| 5324 523 | Beef         | Sandwiches | 0           | 9           | \$20.25      |
| 5592245  | Brewery      | Drinks     | 0           | 6           | \$4.50       |

**Report:**  
This is an example of a PLU Report with the zero-skip feature on. Reports can be viewed on the computer and printed.

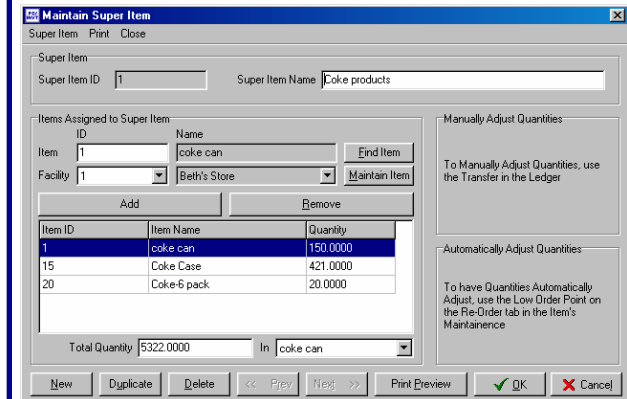
## Version 6 Polling Programs

- Two ways to maintain programs: grids for programs with large number of records and easy to understand detailed forms
- Export programs into text files which can be read by Excel, Access and many other software packages
- Print listings of your programs
- Programs available include:

- PLU
- Department
- Cashier
- Plus many more
- Financial Report Items
- Department Group
- Keyboard

## Features of Version 6 Inventory

- Update inventory counters by retrieving report data from Version 6 Polling or use Inventory as a stand alone module to track the sale of hard goods
- Grid displays to help users quickly view data
- Customizable print, export and import options
- Easy to follow Help Files
- Modify PLU (Price Look Up) prices in either Polling or Inventory and the other package can easily be updated
- Track PLU stock levels and sales data
- View a complete PLU history including sales, transfers and adjusted items
- Create Purchase Orders
- Set low point re-order triggers
- Collect important report data quickly on item and purchase order status
- Prompting preference to help automate transfers
- Tracking of single, six-pack and case or pack and carton using the super item feature



**Super Item Detail:**  
This is the detail screen of the Super Item feature. This allows you to link items like single, six-pack and case together.

