

PC/Poll Software for TEC Registers

Available for the TEC MA & FS 1350, MA & FS 1450, MA 1535, MA & FS 1650 and FS 2600

Features of V6 and V7 Polling:

- Poll Reports
- Save, Send, and Maintain Programs
- Set up Scripts to run common functions
- Set up Scheduled times to run Scripts
- Use the Calendar to automatically run Schedules
- Connect directly or via modem
- Polls the 1595 via TCP/IP in V7



Features of V6 Inventory:

- Retrieve report data from Polling V6
- Track sale of hard goods
- Track PLU stock levels and sales data
- Create Purchase Orders
- Customize print, export and import options



Features of QuickBooks Interface:

- Transfers data from Version 6 and Version 7 Polling
- Instructional wizards guide users through setup
- Built-in log tracking
- Interfaces with QuickBooks 5, 6, 99, 2000 - 2007 and Standard, Premier and Pro versions
- Help files detailing every screen



Download a DEMO from the web today!

Archive Agent



Inventory



V6 Polling



V7 Polling & Inventory



DenView500



PC/Capture



QuickBooks



Interface

www.pcpoll.com

DenView500

Is an ingredient view of sales that bridges the gap between polling and a full-blown inventory system

General Features:

- ◆ Allows users to take previously collected polling reports and calculate the usage on assembled items
- ◆ Allows business owners to manage their businesses at a fraction of the cost of a high-end inventory module
- ◆ Basic stock tracking also included
- ◆ Can be applied to many kinds of stores including restaurants and bars

PC/POLL SYSTEMS

3162 Cedar Crest Ridge
Dubuque, IA 52003

Phone: (563) 556-2323

Fax: (563) 556-0405

Email: sales2007@pcpoll.com

OVER 22 YEARS OF SERVICE
FOUNDED IN 1984

PC/POLL SYSTEMS

Point of Sale Communications Software



PC/POLL SYSTEMS Software for

TEC

SL 9000

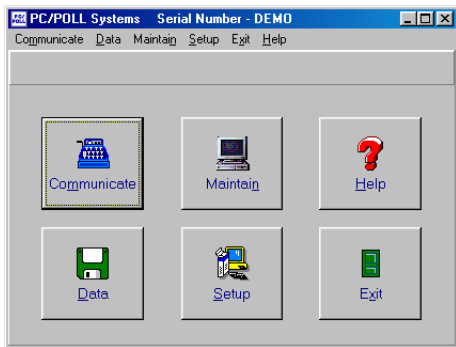


Other PC/POLL SYSTEMS Products

Archive Agent
DenView500
Inventory
PC/Capture
Polling
QuickBooks Interface

Features of Version 6 Polling

- Save and Send Programs
- Poll Reports
- Communicates direct connect or via modem
- Built in help files
- Users can setup the software to be completely manual to fully automatic using the prompted, script, schedule, and calendar
- Allows users to generate their own end of week and month reports using the consolidate feature
- Allows users to save most programs back to the PC from their register, make changes at the PC and then send those changes to the register
- Allows users to take X and Z reports from their PC and save the data for later viewing and easy storage
- Several different report export formats to choose from for interfacing purposes
- Data can be exported from both the report and programming area in comma delimited text file format and select additional formats
- Users can save and edit their keyboard layouts and then send those changes to the register. In addition to the programming, they can also create an overlay with color buttons, color text or icons which can be printed out to place on the register
- Includes options for auto report exporting and printing
- When restoring after a crash or switching to a new computer, V6 Archive Agent transfers all collected data including setup files and data files, saving users time reconfiguring the software on a new PC.



Main Screen:

This is the main menu screen. From here users can enter the different areas of the program.

PLU Detail Screen: This is the detail screen of the PLU program. This lets you easily set-up and make changes to the PLU program.

Version 6 Polling Reports

- Poll both Daily and Periodic Reports
- Poll both X and Z Reports
- Store reports on computer for later retrieval
- View and print reports with Zero Skip on or off
- Consolidate reports taken over a range of time
- Print reports
- Export reports in RTF, Excel, or HTML formats
- Automatically export and/or print any report
- Reports available include:
 - PLU
 - PLU Mark Down
 - PLU Rewrap
 - Hourly
 - Vendor

PLU Number	Name	Dept Number	Weight	Count	Dollars
1	Ground Beef	1	5.040	2	\$10.03
2	Steak	1	2.746	1	\$7.27
3	Pork	1	4.016	2	\$9.99
4	Lamb Chops	1	6.490	2	\$17.30
5	T Bone	1	3.470	1	\$16.93
			Totals	20.750	\$60.51

Report:

This is an example of PLU Report with the zero-skip feature on. Reports can be viewed on the computer and printed.

Version 6 Polling Programs

- Two ways to maintain programs: grids for programs with large number of records and easy to understand detailed forms
- Export programs into text files which can be read by Excel, Access and many other software packages
- Print listings of your programs
- Programs available include:
 - PLU
 - Ingredient
 - Nutrition
 - Speed Key
 - Date/Time
 - Vendor
 - PLU Sale
 - Number of PLUs

Features of the Speed Key Program

Dark Fudge	Caramel	Turtle Dark	Mixed Nuts	Mint Taffy	Candy Button	Lem Slice	Cinn amon	Cherry JB	1/2
Light Fudge	PB Cup	Turtle Light	Cash ew's	Choc Taffy	Sour Balls	Lime Slice	Mint Drops	Lemon JB	1/4
Peanut Brittle	Rasp Cream	Maple Nut	Peanuts	Van Taffy	Bubble Gum	Orange Slice	Lemon Drops	Lime JB	PRESET COUNT
Choc Cherry	Mint Cream	Frog Dark	Almond	Lemon Taffy	Licorice	Peach Slice	Orange Drops	Orange JB	GRADE LINE
Almond Dark	Maple Cream	Frog Light	Walnut	Banana Taffy	Black Licorice	Mixed Slice	Cherry Drops	Apple JB	LOGO
Almond Ivory	Orange Cream	Choc Truff	Filbert	Cherry Taffy	Choc Licorice	Gum Drops	Root Beer	Grape JB	GROUP #
Almond Milk	Peanut Clust	Rasp Truff	Hickory	Grape Taffy	Licorice Bites	Tootsie Roll	Butter Scotch	Banana JB	ST
Toffee	Cashew Clust	Mint Truff	Pistach	Orange Taffy	Jaw Break	Butter Rum	ZERO	TEST	FEED

Using the Speed Key Program, overlays like the one above, can easily be created while programming the function of each key.

Features of the Speed Key Program Include:

- Program the keyboard overlay from the PC
- Program both Speed Key 1 and Speed Key 2
- Easily create new overlays
- Print Keyboard overlays to use on scale
- Color code key background and font colors
- Able to use different fonts, colors and sizes
- Add graphics or icons to keys
- Make changes to program at scale and save to PC
- Use export button to archive overlays

Button Type Screen:

This screen allows you to set the appearance and program the function of each button.