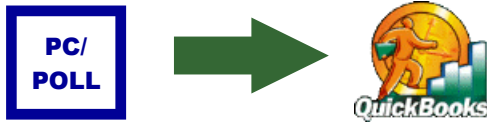


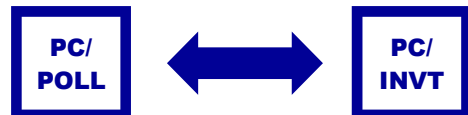
QuickBooks Interface Versions 2 & 3

- Completely revamped interface and routines
- Transfers data from all supported registers in Version 6 and Version 7 Polling with a few simple clicks
- Interfaces with QuickBooks 5, 6, 99, 2000 - 2007, Standard, Pro and Premier versions
- Help files detailing every screen
- Instructional Wizards to guide users through setup and daily maintenance
- Optional password protection for security
- Built-in log tracking for additional security and troubleshooting assistance
- Auto transfer routine for most configurations










Features of Version 6 & 7 Inventory

- Update inventory counters by retrieving report data from Polling or use Inventory as a stand alone module to track the sale of hard goods (Version 6 only)
- Grid displays to help users quickly view data
- Customizable print, export and import options
- Support for Single, Six Pack and Case
- Modify PLU (Price Look Up) prices in either Polling or Inventory and the other package can easily be updated
- Track PLU stock levels and sales data
- View a complete PLU history including sales, transfers and adjusted items
- Create Purchase Orders
- Set low point re-order triggers
- Collect important report data quickly on item and purchase order status
- Prompting preference to help automate transfers
- Includes polling to and from inventory integration



Download a DEMO from the web today!

Archive Agent		DenView500	
Inventory		PC/Capture	
V6 Polling		QuickBooks Interface	
V7 Polling & Inventory			

www.pcpoll.com

DenView500

Is an ingredient view of sales that bridges the gap between polling and a full-blown inventory system

General Features:

- Allows users to take previously collected Version 6 & 7 reports and calculate the usage on assembled items and includes basic stock keeping and on-hand values
- Includes basic stock keeping and on-hand values
- Allows business owners to manage their businesses at a fraction of the cost of a high-end inventory module
- Can be applied to many kinds of stores including restaurants and bars

PC/POLL SYSTEMS

3162 Cedar Crest Ridge
Dubuque, IA 52003-7875

Phone: (563) 556-2323
Fax: (563) 556-0405
Email: sales2007@pcpoll.com



PC/POLL SYSTEMS

Point of Sale Communications Software



PC/Capture for

SAM4S

Registers

Version 6

600
650
650 R
655
1000
5200
5200 M

Version 7

2000
7000
7040
5215
5215 M
5240
5240 M
6500
6500 II
6540
6540 II



Other PC/POLL SYSTEMS Products

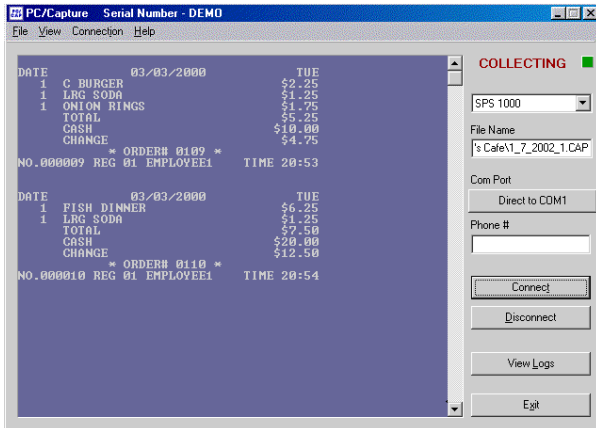
Archive Agent
DenView500
Inventory
Polling
QuickBooks Interface

PC/Capture ~ Main Menu

PC/Capture is a journal and report collecting program. It collects report and journal data on the PC to turn your PC into a printer. It can be used as a security monitor for sales.

From the Main Menu users can:

- Setup the software quickly
- See the data as it is being collected
- The software will automatically name the data files with easy to remember names which include the current date
- If the data file becomes too large the software will automatically closes and starts a new file so program can run continuously
- Collect data by connecting directly to the register or use the phone number field to connect via modem
- Gather data from single or multiple register systems
- Collect report data as well as journal information
- LAN and WAN communications available through Ether serial devices

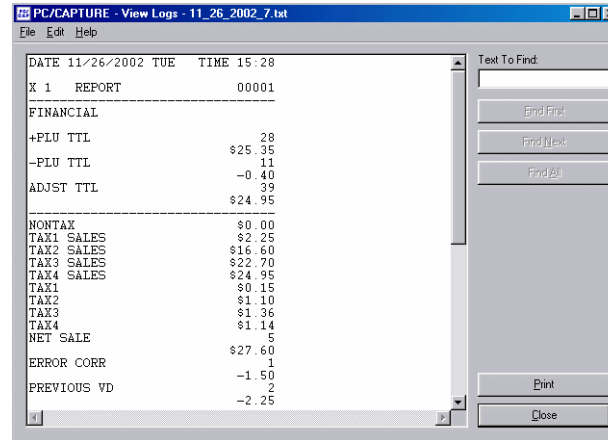


Display Screen:
This is an example of the PC/Capture main screen. This allows you to monitor your entire chain of registers from your office PC.

PC/Capture is a stand alone product. Polling is not required, but can be used in conjunction with PC/Capture.

PC/Capture ~ View Logs

PC/Capture keeps track of each and every sale at the register and stores that information in a text file on the computer.



Display Screen:
This is an example of the PC/Capture View screen. From here users can view, print and search collected data files.

From the View Logs area of the software users can:

- View and print logs at their leisure
- View both journal and report data
- Easily search for key words in logs using the find first, find next and find all buttons
- The find all button displays a quick jump search screen to allow users to rapidly view all instances of the entered Text To Find and navigate between them
- The quick jump screen also allows users to print a listing of all Text To Find including complete line information
- PC/Capture can be security program to monitor store sales and report data
- Select All option to highlight all displayed text
- Copy feature allows users to copy a small section or the entire capture file
- Keyboard hot keys to help users quickly copy, paste, and find text
- Detailed help files to aid in setup and usage of the software

Features of Version 6 & 7 Polling

- Save and Send Programs
- Poll Reports
- Communicates direct connect or via modem
- Built in help files
- Users can setup the software to be completely manual to fully automatic using the prompted, script, schedule, and calendar
- Allows users to generate their own end of week and month reports using the consolidate feature
- Allows users to save programs back to their PC from the register, make changes at the PC and then send those changes to the register
- Allows users to take X and Z reports from their PC and save the data in later viewing and easy storage
- Several different report export formats to choose from for interfacing purposes
- Data can be exported from both the report and programming area in comma delimited text file format and select additional formats
- Users can save and edit their keyboard layouts and then send those changes to the register. In addition to the programming, they can also create an overlay with color buttons, color text or icons which can be printed out to place on the register
- Includes options for auto report exporting and printing
- Interfaces with Archive Agent, DenView500, Inventory, and QuickBooks Interface

Features of Version 6 & 7 Archive Agent

- Archive Agent interfaces with all V6 & 7 Polling registers
- Archives PC/POLL SYSTEMS Polling, Inventory, PC/Capture and QuickBooks Interface V2 & V3 data. It is a complete backup for all Version 6 & 7 products
- Allows users to Archive, Restore, and Delete files from their polling directories.
- Corporate polling features include emailing and ftp options and Merge operations.