



Journal & Report Collection Software

PC/Capture

PC/POLL SYSTEMS

3162 Cedar Crest Ridge, Dubuque IA 52003
TEL: 563-556-3556 FAX: 563-556-0405
Email: sales@technology4retailers.com
Internet: www.technology4retailers.com

PC/CAPTURE Manual

Last Updated on 4/2/10

- TRI-TECHNICAL SYSTEMS, INC. RETURN POLICY 5
- Term of License 6
- Limitation of Liability..... 6
- Software License 7
- Software Warranty 7
- Receiving Technical Support..... 8
- Crucial Information*..... 8
- Recommended System Additions 9
 - System Requirements* 9
 - System Recommendations*..... 9
- Getting Started.....10
 - Release Code.....10
- Register Setup for Communication with PC/CAPTURE.....11
 - CRS 3000 Setup for Electronic Journal11
 - CRS 3000 Setup for Report Printing11
 - Sam4s (Samsung) 650/650R/600 Setup using Electronic Journal and Report Printing11
 - Sam4s (Samsung) 1000 Setup for Electronic Journal12
 - Sam4s (Samsung) 1000 Setup for Report Printer12
 - Sam4s (Samsung) 6500 Setup for Electronic Journal12
 - Sam4s (Samsung) 6500 Setup for Report Printer13
 - Sam4s (Samsung) 7000 Setup for Electronic Journal13
 - Sam4s (Samsung) 7000 Setup for Report Printer13
 - Sam4s (Samsung) 52XX and 52XXM Remote Journal Printing Setup13
 - Sharp: Journal Printer and Report Printer13
 - Sharp 750, 770, and 3300 Register Setup14
 - Sharp 600 and 700 R Printer.....14
- Cabling Diagrams15
- PC/CAPTURE Views17
 - PC/CAPTURE Main Collection Screen17
 - Status17
 - File Name17
 - Com Port.....18
 - Phone #19
 - Connect/Disconnect.....19
 - View Logs19
 - PC/CAPTURE Main Screen Menu Options19
- Electronic Journal View21
 - Open Past Logs21
 - File Name21
 - Find First, Find Next, and Find All21
 - Print22
 - Close22
- Frequently Asked Questions.....22
 - Maximum File Size.....22
 - Default File Location22

Changes effective August 24, 2009

TRI-TECHNICAL SYSTEMS, INC. RETURN POLICY

NO RETURNS OR REFUNDS ON SOFTWARE PURCHASES.

Due to current technology capabilities, all dealers and prospective customers are encouraged to request a one (1) week demo code to preview the polling software, thus allowing users to make an informed decision before purchasing. After an order has been processed, customers (end-users) should contact their dealer/reseller if a return or refund is requested. All such request must go through the distributing agent. A cancellation code may be required by the dealer. Please give that information to the dealer prior to removing the software from the PC.

On products produced from vendors other than TRI-TECHNICAL SYSTEMS, INC., the manufacturer's warranties apply. TRI-TECHNICAL SYSTEMS, INC. does not give or imply that it gives any warranty on any product(s) it distributes, including modems and cables. TRI-TECHNICAL SYSTEMS, INC. will provide assistance, on a best-effort basis only, to customers needing warranty assistance in dealings with the manufacturer(s) of the product(s) TRI-TECHNICAL SYSTEMS, INC. distributes.

Term of License

This license is effective until terminated. You may terminate it at any time by destroying the program together with all copies, modifications, and merged portions in any form. It will also terminate upon conditions set forth elsewhere in this Agreement or if you fail to comply with any term or condition of this Agreement. You agree upon such termination to destroy the program together with all copies, modifications, and merged portions in any form.

Limitation of Liability

- A) EXCEPT AS OTHERWISE EXPRESSLY PROVIDED HEREIN, TRI-TECHNICAL SYSTEMS, INC. MAKES NO WARRANTIES, EITHER EXPRESSED OR IMPLIED, AS TO ANY MATTER WHATSOEVER, INCLUDING BUT NOT LIMITED TO: IMPLIED WARRANTIES, MERCHANTABILITY, OR FITNESS FOR A PARTICULAR PURPOSE.
- B) Except as otherwise provided herein, TRI-TECHNICAL SYSTEMS, INC. shall not be liable for any claims, damages or expenses of any kind, whether made or suffered by the Buyer or any other person, unless such claims, damages, or expenses are directly caused by TRI-TECHNICAL SYSTEMS, INC. negligence or willful misconduct.
- C) The parties agree that in the event any liability is imposed on TRI-TECHNICAL SYSTEMS, INC. arising out of or in connection with the purchase or sales of TRI-TECHNICAL SYSTEMS, INC.'s products, it shall be impractical or extremely difficult to fix actual damages and, therefore, agrees that the aggregate amounts payable by TRI-TECHNICAL SYSTEMS, INC. by reason thereof shall not exceed the amount paid to TRI-TECHNICAL SYSTEMS, INC. by the Buyer for the product with respect to which such liability is imposed. TRI-TECHNICAL SYSTEMS, INC. shall not be liable for delays.
- D) TRI-TECHNICAL SYSTEMS, INC. shall in no event be liable to the Buyer or any other party for lost profits, diminution of good will, any other incidental, or consequential damages or loss of use, or other commercial loss, however occasioned.

Software License

TRI-TECHNICAL SYSTEMS, INC. provides this program and licenses its use. You may:

- A) Use the program on a single PC;
- B) Copy the program into any machine readable or printed form for backup or modification purposes in support of your use of the program on a single PC (certain programs, however, may include mechanisms to limit or inhibit copying. They are marked "copy protected");

YOU MAY NOT USE, MODIFY, OR TRANSFER THE PROGRAM OR ANY COPY, MODIFICATION, OR MERGED PORTION, IN WHOLE OR IN PART, EXCEPT AS EXPRESSLY PROVIDED FOR IN THIS LICENSE.

IF YOU TRANSFER POSSESSION OF ANY COPY, MODIFICATION, OR MERGED PORTION OF THE PROGRAM TO ANOTHER PARTY, YOUR LICENSE IS AUTOMATICALLY TERMINATED.

Software Warranty

TRI-TECHNICAL SYSTEMS, INC. warrants any article or component supplied but not developed and produced by TRI-TECHNICAL SYSTEMS, INC. to the extent warranted to TRI-TECHNICAL SYSTEMS, INC. by the manufacturer of such article or component and only to such extent. TRI-TECHNICAL SYSTEMS, INC. warrants that, for a period of thirty (30) days from the date of delivery thereof, any software developed and produced by TRI-TECHNICAL SYSTEMS, INC. shall be free from defects in materials and workmanship, provided, however that TRI-TECHNICAL SYSTEMS, INC.'s obligation shall be limited to repair or replacement of any such software which is returned to TRI-TECHNICAL SYSTEMS, INC. and shown to TRI-TECHNICAL SYSTEMS, INC.'S satisfaction to be defective. TRI-TECHNICAL SYSTEMS, INC.'s repair or replacement of defective software shall be performed during TRI-TECHNICAL SYSTEMS, INC.'s normal working hours. This warranty does not apply to any software that has been subject to misuse (including failure to follow corrective routines or instructions), negligence, or accident by other causes not arising from the fault or negligence of TRI-TECHNICAL SYSTEMS, INC.

Receiving Technical Support

First, check the manual that came with your software. When using Windows versions of TRI-TECHNICAL SYSTEMS, INC., click the Help button that appears on the main menu.

Call the cash register dealer who sold the cash register and TRI-TECHNICAL SYSTEMS, INC. software for answers.

If your dealer cannot help you, support is available in the other forms listed below:

- Please visit our website: www.technology4retailers.com. The site contains setup documentation as well as instructional tutorials on some of the products.
- Email TRI-TECHNICAL SYSTEMS, INC. at sales@technology4retailers.com. Briefly describe your problem. Include your name, company information, telephone number, email address, etc. We will either try to put you in contact with a dealer in your area or we do have end-user support options that could be contracted directly through TRI-TECHNICAL SYSTEMS, INC.
- Call 563-556-3556 and ask to speak with a sales representative. We will either try to put you in contact with a dealer in your area or we do have end-user support options that could be contracted directly through TRI-TECHNICAL SYSTEMS, INC.

Crucial Information

The following information is very important during the analysis of any problem:

1. The **version and serial numbers** of our software are located on the software disk or on the computer screen when the program is running.
2. The **EPROM version** of the register and the date it was issued, plus the **make and model** of the cash register.
3. The exact wording of the error message.
4. What program you are using: Polling, Inventory, QuickBooks Interface, or DenView. Also know what were you doing at the time the problem occurred and record this information.
5. Computer type, system version, and amount of available memory. Also, have the Network configuration if applicable.
6. Printer manufacturer, type, and model.
7. Modem manufacturer, type, and model.

It is often helpful to record answers to your support questions in the software manual in case the same problem is encountered in the future.

SPECIAL NOTE: DEALER SUPPORT AND TRAINING SESSIONS ARE OFFERED OVER THE PHONE. DEALERS AND/OR DEALERS AND USERS CAN ALSO COME TO TRI-TECHNICAL SYSTEMS, INC. IN DUBUQUE, IA FOR PERSONAL TRAINING ON ALL OF TRI-TECHNICAL SYSTEMS, INC.'S PRODUCTS. PLEASE CALL FOR PRICING AS FEES MAY APPLY.

Recommended System Additions

System Requirements

- A PC capable of running a Window's Operating System (NOTE: It is recommended that users run Windows 2000 or above. Some of the software applications will not run on Win98 due to limitations on that operating system.)
- Version 6 applications can support Win98+
- Version 7 requires Win2000+
- Windows Printer Installed
- Minimum 256 colors
- Minimum 800 x 600 resolution (Note: Some Version 7 Screens require 1024 x 768)
- 512 MB of RAM
- 1 GHz processor speed
- Serial port or modem (if interfacing to V6 Polling) USB to serial and ether to serial devices may be used. Some registers also support native TCP/IP communications. Please consult your cash register dealer for polling options.)

System Recommendations

- It is recommended to use Windows XP+ for the operation system. Users of Vista or Windows7 may need to install the software with compatibility mode or administrative rights. Users of 64 bit operating systems will need to complete additional setup steps to run a 32 bit application on a 64 bit OS. 64 bit users may also need to verify that their hardware devices have drivers for a 64 bit OS. Please contact the vendor of the device for 64 bit drivers.
- Pentium 4/1 GHz or equivalent processor
- 20 GB hard drive
- 1 GB+ of RAM
- 1024 x 768 resolution
- 16 million colors video display
- Backup medium (ex: zip drive, CD-ROM drive, 3.5 inch floppy drive)
- A Internet connection, static IP address, and a router may be required for WAN (wide area network) polling communications

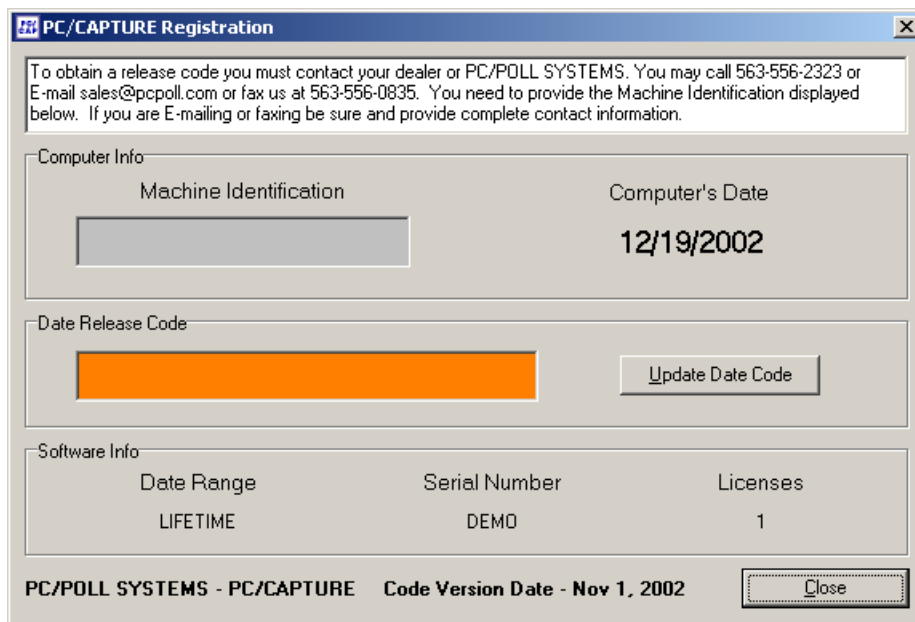
Getting Started

Release Code

The Release Code screen is displayed when the program is first opened. The release code is a machine dependent registration code. If any hardware in the computer changes or is added, a new release code will be needed.

To obtain a Date Release Code, email Tri-Technical Systems at sales@technology4retailers.com or call 563-556-3556 to receive a Date Release Code. Calling Tri-Technical Systems is the most efficient way to receive your new Date Release Code.

The Date Release Code determines the date range when the software will function, the program's serial number, and the number of licenses the program will support. All of this information is shown on the screen and will be determined by the Date Release Code. Information cannot be entered into any of these areas, as the Date Release Code will update it automatically. Enter in the Date Release Code given by Tri-Technical Systems Staff and press the button labeled **Update Date Code**. The code must be entered during the date range or it will not work! Check the dates displayed in the boxes shown under Date Range to make sure the date range is correct.



On the above screen, notice "Code Version Date". When you call for a release code, you will need to tell the Tri-Technical Systems Staff member this date.

On the above screen, also notice "Computer's Date". This shows the date your computer is set to. If the date is incorrect, the release code will not work.

Register Setup for Communication with PC/CAPTURE

NOTE 1: PC/POLL SYSTEMS recommends that dealers perform the register setup.

NOTE 2: Before using the journal printer for any register, connect the cable from the register to the PC, open the software, select a port, and hit the connect button. Then setup the register as described below.

CRS 3000 Setup for Electronic Journal

1. At the register, enter Service-Mode. Go to Memory Allocation and set the number of the Electronic Journal Allocation to "0" if you prefer real-time collecting. Otherwise, allocate EJ as normal.
2. In P-Mode, go to the following areas: RS232 Config, Printer R/J/K Tables, and then Journal Printer Routing. Once in Journal Printer Routing, set the register number and port that are designated for printing.

The printer cable must be connected before saving and exiting the printer setup area. Return to register mode.

CRS 3000 Setup for Report Printing

1. In P-Mode, go to the following areas: RS232 Config, Printer R/J/K Tables, and then go to Receipt/Report Printer Routing.
2. Once in Receipt/Report Printer Routing, set the register number and port number.

Note: The printer type should be set to 000.

The printer cable must be connected before saving and exiting the printer setup area. Return to register mode.

Sam4s (Samsung) 650/650R/600 Setup using Electronic Journal and Report Printing

Using Report Capture:

1. Enter S-Mode and select the port designated for printing.
2. Set the Device Function to RP (Remote Printer) and the printer type as a Sam SRP-100. (Use Sam SRP-102 for the 600.)
3. Switch to P-Mode and go to Print Options, set the Report Port to the port you defined as the RP in step 2.

Note: Printers cannot be shared across an IRC.

The printer cable must be connected before saving and exiting the printer setup area. Return to register mode.

Using Electronic Journal Capture:

1. Enter S-Mode and go into Memory Allocations, set the Electronic Journal for the number of lines you want to capture. Set to 0 if everything should be saved by the software and nothing should be saved in the register.
2. Enter S-Mode at the register. Select the port designated for printing and set the Device Function to RJ (Remote Journal). Then set the printer type to Sam SRP-100. (Use Sam SRP-102 for the 600.)
3. Switch to P-Mode, go into Print Options and set the EJ port to the same port defined in S-Mode. (Skip this step for the 600.)
4. Go to System Options and select Yes for EJ.

Note: Printers cannot be shared across an IRC.

The printer cable must be connected before saving and exiting the printer setup area. Return to register mode.

To Dump Electronic Journal at the Register (if memory allocation is not set to 0):

1. In X-Mode, select the option for E.J. Operation and set the options you want to print.
2. Enter Z-Mode and select Reset E.J. to reset.

The printer cable must be connected before saving and exiting the printer setup area. Return to register mode.

Sam4s (Samsung) 1000 Setup for Electronic Journal

1. Enter S-Mode at the register. Go to the Serial Port selection and set the port designated for printing to a Sam SRP-100.
2. Switch to P-Mode, go to System options, then General Printing Options and set the "Journal: Real time or Batch" option to Batch.
3. Stay in P-Mode; go to Printer Tables & KV Routing. Enter Detail Printer Routing and set up a printer.
4. Stay in P-Mode; go to Printer Tables & KV Routing again. This time enter System Printer Config and set the printer created in the previous step to the correct register number and port number. Also be sure to name the printer, i.e. set its descriptor.

The printer cable must be connected before saving and exiting the printer setup area. Return to register mode.

Sam4s (Samsung) 1000 Setup for Report Printer

1. Enter S-Mode at the register. Go to the Serial Port selection and set the port designated for printing to a Sam SRP-100.
2. Switch to P-Mode. Go to Printer Tables & KV Routing. Enter Receipt Printer Routing and set up a printer.
3. Stay in P-Mode, go to Printer Tables & KV Routing again. This time enter System Printer Config and set the printer created in the previous step to the correct register number and port number. Also be sure to name the printer, i.e. set its descriptor.

The printer cable must be connected before saving and exiting the printer setup area. Return to register mode.

Sam4s (Samsung) 6500 Setup for Electronic Journal

1. Enter P-Mode Communications Programming.
2. Set the baud rate on the selected port to 9600.
3. Set the port's function to Journal Echo.

The printer cable must be connected before saving and exiting the printer setup area. Return to register mode.

Sam4s (Samsung) 6500 Setup for Report Printer

1. Go into communications programming.
2. Set up the baud rate on the chosen port.
3. Set the port up for Remote Printer.
4. Go into Print Option Programming.
5. Set up the Option Report Output to the port number for the chosen port.
(For example: 0 = No remote printing; 1 = Comm port 1; 2 = Comm port 2)

The printer cable must be connected before saving and exiting the printer setup area. Return to register mode.

Sam4s (Samsung) 7000 Setup for Electronic Journal

1. Enter S-Mode at the register. Go to the Serial Port selection and set the port designated for printing to a Sam STP-103.
2. Switch to P-Mode, go to System options, then General Printing Options and set the "Journal: Real time or Batch" option to Batch.
3. Staying in System Options, go to EJ & Detail Printing Options and set what items you want to send to the detail printer.
4. Within P-Mode, go to Printer Tables & KV Routing. Enter Detail Printer Routing and set up a printer by assigning the appropriate values to the fields Register # and Port #.
5. Staying in P-Mode, go to Printer Tables & KV Routing again. This time enter System Printer Config and set the printer created in the previous step to the correct register number and port number. Also be sure to name the printer, i.e. set its descriptor.

The printer cable must be connected before saving and exiting the printer setup area. Return to register mode.

Sam4s (Samsung) 7000 Setup for Report Printer

1. Enter S-Mode at the register. Go to the Serial Port selection and set the port designated for printing to a Sam STP-103.
2. Switch to P-Mode. Go to Printer Tables & KV Routing. Enter Receipt Printer Routing and set up a printer by assigning the appropriate values to the fields Register # and Port #.
3. Stay in P-Mode, go to Printer Tables & KV Routing again. This time enter System Printer Config and set the printer created in the previous step to the correct register number and port number. Also be sure to name the printer, i.e. set its descriptor.

The printer cable must be connected before saving and exiting the printer setup area. Return to register mode.

Sam4s (Samsung) 52XX and 52XXM Remote Journal Printing Setup

1. Enter S-mode at the register and set the Device Function on the desired port for remote journal within the RS-232 Communication Options.
2. Also within RS-232 Communication Options, set the Printer Type (option #11) to SRP-100.

The printer cable should be connected before saving and exiting the printer setup area. Return to register mode

Sharp: Journal Printer and Report Printer

Users can setup PC/CAPTURE for a Sharp Journal printer, a Report printer, or both. For the Sharp 750, 770, and 3300, PC/CAPTURE can be setup as a J printer, a report printer or both. For the Sharp 600 and 700, PC/CAPTURE can be setup as an R printer only.

Sharp 750, 770, and 3300 Register Setup

1. In SRV-Mode (Dealer-Only mode) go into Setting, select Device Assign, and then choose J-Printer or Report Printer or both.
2. Set the printer as an Epson TM-T85. Set up the terminal and channel to the correct settings.
3. Make sure Auto Cutter is set to No and that Paper Sheet is set as 1 Sheet.

The printer cable must be connected before saving and exiting the printer setup area. Return to register mode.

Sharp 600 and 700 R Printer

1. In SRV-Mode, go into Setting, and select Device Config.
2. Then go into report printer, set the terminal and channel numbers.
3. Change the printer type to TM-T88/85.
4. Make sure the auto cutter is set to No and Set Logo Text to Print.

The printer cable must be connected before saving and exiting the printer setup area. Return to register mode.

Cabling Diagrams

CRS 3000 Register to PC

Register	PC	
RJ45	DB9F	DB25
3	2	3
4	3	2
6	7	4
7	5	7
8	6	6

Sam4s (Samsung) 650, 650R, 600 & 6500 to PC

Register	PC	
DB9M	DB9F	DB25M
2	3	2
3	2	3
4	6	6
5	5	7
8	4	20

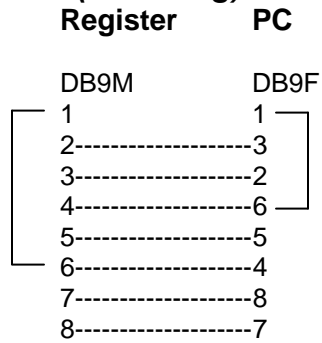
Sam4s (Samsung) 1000 to PC

Register	PC	
RJ45	DB9F	DB25M
3	2	3
4	3	2
6	4	20
7	5	7
8	6	6

Sam4s (Samsung) 7000 to PC

Register	PC	
DB9M	DB9F	DB25M
2	3	2
3	2	3
4	6	6
5	5	7
8	4	20

Sam4s (Samsung) 52XX and 52XXM to PC



Sharp Capture Direct

Register	PC
DB9F	DB9F DB25M
1	7&8 4&5
2	3 2
3	2 3
4	6 6
5	5 7
6	4 20
7&8	1 8

Alternate Sharp Capture Direct

Register	PC
DB9F	DB9F DB25M
2	3 2
3	2 3
4	6 6
5	5 7&1
6	4 20
8	7 4

Sharp Modem

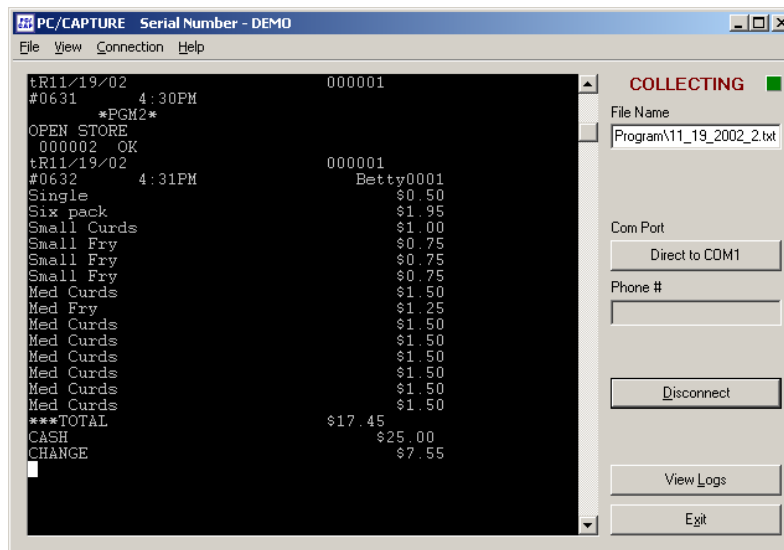
Register	PC
2	3
3	2
4	20
5	7
6	6
7	8

Note: Contact Tri-Technical Systems for via modem cabling.

PC/CAPTURE Views

The PC/CAPTURE program has two parts: the PC/CAPTURE main collection screen and the Electronic Journal View screen. The PC/CAPTURE main screen shows a black window and displays the information as it is being recorded. The EJ View screen holds a white window that shows information that has already been collected.

PC/CAPTURE Main Collection Screen



Status

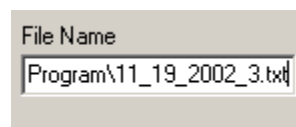
The PC/CAPTURE main screen is shown above. The status of the program is displayed in red in the upper right hand corner of the PC/CAPTURE main window. There are six possible states for the program:

- IDLE – Currently not collecting data and not connected to the register.
- CONNECTING – Connecting to the register via a direct connection.
- DIALING – Dialing the register (only used when a modem is set up to communicate).
- COLLECTING – Collecting data from the register.
- DISCONNECTING – Disconnecting from a direct connection to the register.
- HANGING UP – Disconnecting from a modem connection to the register.

The green box next to the Status will turn red when the program is actively collecting data



File Name



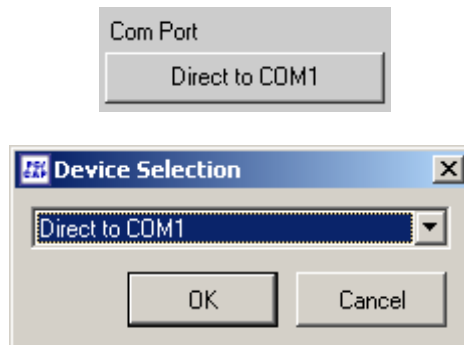
The file name box displays the name of the file that is currently being used to collect data. To change the file name, select **File** from the top left corner of the program window.

If **New** is clicked, the program will automatically select the filename and create the new file in the same directory as the program executable file. The name will first display the date (e.g. 1_4_2002) and then a number. This number indicates the number of files that have been created during the day. For example, the first file of the day is 1_4_2002_1.txt and the second is 1_4_2002_2.txt, etc.

To create a new file, go to **Open**, select the location, type in the name in the box labeled **File Name:** and click the **Open** button. This will cause the program to use this new file for collecting data. To open an existing file, locate it and click **Open**. This will append all new data to the file selected. However, the terminal window does not display data that was collected in a previous session. Only NEWLY collected data is displayed in the main screen's part of the program.

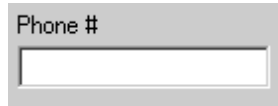
Com Port

The Com port or connection that the capture program is using to communicate is displayed under the area entitled **Com Port**. To change the method of connection, click the button underneath **Com Port**. This opens the Device Selection window that shows all available connections to the computer.



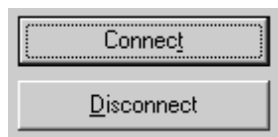
Phone

If the program is collecting via a modem, the phone number will be displayed in this box. To enter a phone number, click in the box and type in the number.

A rectangular input field with a light gray border and a white background. The text "Phone #" is positioned at the top left of the field.

Connect/Disconnect

These buttons cause the program to connect and disconnect from the cash register. Check the Status area to make sure the connection was successful.

Two rectangular buttons stacked vertically. The top button is labeled "Connect" and has a dashed border. The bottom button is labeled "Disconnect" and has a solid border.

View Logs

Clicking on the **View Logs** button displays the Electronic Journal View section of the program.

A rectangular button with a light gray border and a white background, labeled "View Logs".

PC/CAPTURE Main Screen Menu Options

File – New

If “New” is clicked, the program will automatically select the filename and create the new file. The name will first display the date (e.g. 1_4_2005) and then a number. This number indicates the number of files that have been created during the day. For example, the first file of the day is 1_4_2002_1.txt and the second is 1_4_2005_2.txt, etc.

File – Open

Clicking **Open** instead of **New** allows the user to select the location AND the name of the collection file.

To create a new file, go to **Open**, select the location, type in the name in the box labeled **File Name:** and click the **Open** button. This will cause the program use this new file for collecting data. To open an existing file, locate it and click **Open**. This will append all new data to the file selected. However, the terminal window does not display data that was collected in a previous session. Only NEWLY collected data is displayed in the main screen’s part of the program.

File – Exit

This exits the program and automatically saves data to the collection file before closing. The program first disconnects from the cash register before exiting the software as to not corrupt the modem or the cash register data. Please be patient while the program is disconnecting!

View – View Logs

This option opens the Electronic Journal View section of the program.

Connection – Connect

This will connect the computer to the cash register using the properties set in the program either via the Com port or via modem. The connection settings are displayed on the right side of the main PC/CAPTURE window.

Connection – Disconnect

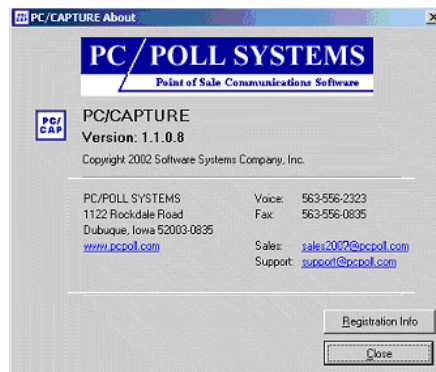
This option will disconnect a direct connection to a cash register or hang up a modem. This performs the same function as clicking on the **Disconnect** button on the main screen.

Help – Contents

Choosing **Contents** will display the help file for the software.

Help – About

Clicking on **Help | About** opens a window listing the contact information for PC/POLL Systems and the version of the software.

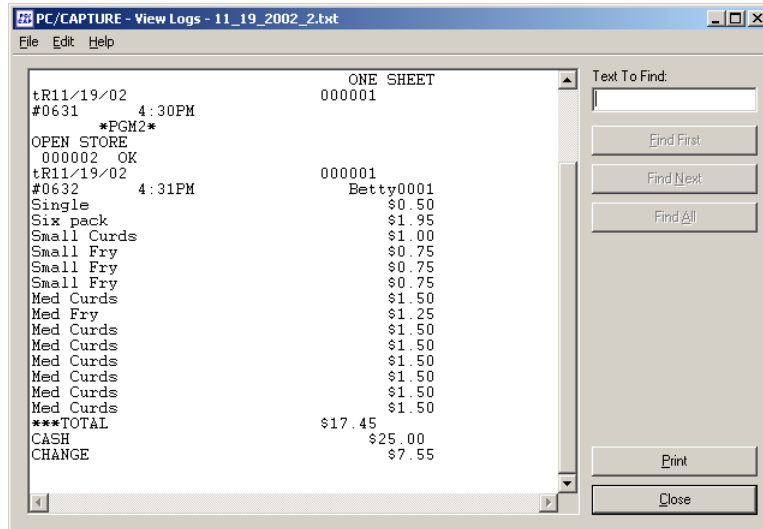


Help – Registration

Selecting **Help | Registration** shows the Release Code screen for the PC/CAPTURE program.

Electronic Journal View

Clicking on the **View Logs** button on the main screen will enter the Electronic Journal View section.



Open Past Logs

To display data, click on **File** and select **Open Past Logs**. Locate the location of the file and click **Open**. This does NOT change the collection file on the main screen.

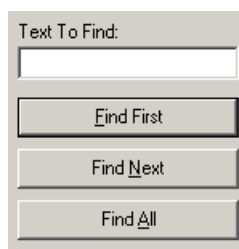
Note: A file that is being used as the collection file in the Collection part of the program cannot be viewed. First disconnect from the file in the Collection area and then it can be displayed in the window shown above.

File Name

The name and path of the file being displayed is shown in this box.

Find First, Find Next, and Find All

Find First, **Find Next**, and **Find All** can be used to locate text in the capture file. The program only locates one instance of the text per line. In the box above **Find First** type in the text to be located. Clicking on **Find First** will find the first occurrence of the text in the file. (A message is displayed if the text is not located anywhere in the file.) To find the next location of the text, click **Find Next**. This begins searching the line below the current location of the cursor. Clicking **Find All** will find all locations of the text in the file.



Print

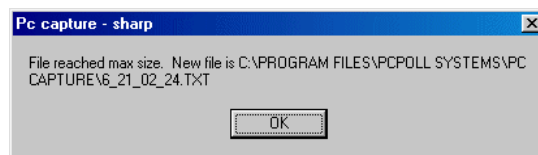
Selecting **Print** opens up the printer selection window and will print the current file.

Close

The **Close** button closes the Electronic Journal View section of the program and displays the main PC/CAPTURE Collection window again.

Frequently Asked Questions

Maximum File Size



The above message is displayed when the file currently in use reaches a maximum size of approximately 800 KB. The file in use is then closed and a new file is created and opened to continue saving the data from the register.

Default File Location

The default file location for capture files is in the same directory as the executable. If the executable is actually located ON the desktop all default capture files will be on the desktop also.

Index

B	
Backup	9

C	
Cable Diagrams	15–16
Close	22
Code Version Date	10
Collecting Data Light	17
Com Port	18
Connect/Disconnect	19
Connection – Connect.....	20
CRS 3000 Setup for Electronic Journal	11
CRS 3000 Setup for Report Printing	11
<i>Crucial Information</i>	8

D	
Date Range.....	10
Date Release Code.....	10
Default File Location	22
Device Selection window	18

E	
Electronic Journal View.....	21
EPROM version	8

F	
File – Exit.....	19
File – New	19
File – Open	19
File Name.....	17, 21
Find All	21
Find First	21
Find Next.....	21
Frequently Asked Questions	22

H	
Help – About.....	20

L	
Limitation of Liability	6

M	
Main Collection Screen	17
make and model	8
Maximum File Size	22

O	
Open Past Logs	21

P	
PC/CAPTURE Main Screen Menu Options	19
PC/CAPTURE Screen Views.....	17
Phone #	19
Polling.....	9
Possible States for the Program	17
Print.....	22
Program Status.....	17

R	
Receiving Technical Support	8
Recommended System Additions	9
Register Setup for Communication	11
Release Code	10
Release Code screen	10
RETURN POLICY	5

S	
Sam4s (Samsung) 1000 Setup for Electronic Journal	12
Sam4s (Samsung) 1000 Setup for Report Printer	12
Sam4s (Samsung) 52XX and 52XXM Remote Journal Printing Setup	13
Sam4s (Samsung) 650/650R/600 Setup using Electronic Journal and Report Printing.....	11
Sam4s (Samsung) 6500 Setup for Electronic Journal	12
Sam4s (Samsung) 6500 Setup for Report Printer	13
Sam4s (Samsung) 7000 Setup for Electronic Journal	13
Sam4s (Samsung) 7000 Setup for Report Printer	13
Sharp 600 and 700 R Printer	14
Sharp 750, 770, and 3300 Register Setup	14
Sharp: Journal Printer and Report Printer.....	13
Software License	7
Software Warranty.....	7
<i>System Recommendations</i>	9
<i>System Requirements</i>	9

T	
Term of License	6
To Dump Electronic Journal at the Register	12

U	
Update Date Code	10
Using Electronic Journal Capture	12
Using Report Capture	11

V

version and serial numbers.....8

View – View Logs..... 20
View Logs 19
View Logs button 21

