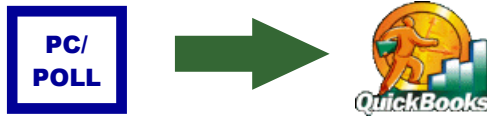


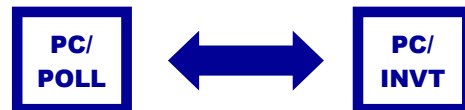
QuickBooks Interface Version 2 & 3

- Completely revamped interface and routines
- Transfers data from all supported registers in Version 6 & 7 Polling with a few simple clicks
- Interfaces with QuickBooks 5, 6, 99, 2000 - 2007, Standard, Pro and Premier versions
- Help files detailing every screen
- Instructional Wizards to guide users through setup and daily maintenance
- Optional password protection for security
- Built-in log tracking for additional security and troubleshooting assistance
- Auto transfer routine for most configurations



Features of Version 6 & 7 Inventory

- Update inventory counters by retrieving report data from Polling or use Inventory as a stand alone module to track the sale of hard goods (Version 6)
- Grid displays to help users quickly view data
- Customizable print, export and import options
- Support for Single, Six Pack and Case
- Modify PLU (Price Look Up) prices in either Polling or Inventory and the other package can easily be updated
- Track PLU stock levels and sales data
- View a complete PLU history including sales, transfers and adjusted items
- Create Purchase Orders
- Set low point re-order triggers
- Collect important report data quickly on item and purchase order status
- Includes polling to and from inventory integration



Features of Version 6 & 7 Archive Agent

- Archive Agent interfaces with all V6 & 7 Polling registers: CRS, Sam4s, SHARP, and TEC.
- Archives PC/POLL SYSTEMS Polling, Inventory, PC/Capture and QuickBooks Interface data. It is a complete backup for all Version 6 & 7 products
- Allows users to Archive, Restore, and Delete files from their polling directories.
- Polling archive and restore options are divided into sections such as archiving just the setup files or just the report files.
- Allows users to view previously created Polling archives.
- User prompts to guide the user through the software.
- Data is compressed and stored in Zip files.
- Users are able to restore Setup Files, Report Files, All Program maintenance, Select Program, and All Data Files. PC/Capture, Inventory, PLU / UPC, and QuickBooks Interface V2 Data Files can also be restored.
- Archive Agent takes the zip files created within the Archive section and extracts them to the current data locations.
- Corporate polling features include email / FTP options and data file merging.

PC/POLL SYSTEMS

3162 Cedar Crest Ridge
Dubuque, IA 52003

Phone: (563) 556-2323

Fax: (563) 556-0405

Email: sales2007@pcpoll.com

OVER 22 YEARS OF SERVICE
FOUNDED IN 1984

PC/POLL SYSTEMS

Point of Sale Communications Software

DENVIEW 500

*Bridge the Gap
between
Polling and Inventory Systems*



CASIO

CRS

SAM4S

SHARP

TEC

Other PC/POLL SYSTEMS Products

Archive Agent
Inventory
PC/Capture
Polling
QuickBooks Interface

Features of DenView500

- DenView500 is a new product that helps bridge the gap between Polling and a full-blown Inventory system.
- DenView500 allows users to take previously collected Version 6 and Version 7 PLU reports and calculate the usage on assembled items.
- DenView500 works with ALL Version 6 & 7 cash registers. This program gives users an ingredient view of item sales data.
- DenView500 can be applied to many different types of stores including restaurants and bars.

DenView500
File Sales Data Setup Options Help

Master Items Linked Items

Raw Purchasing Unit	Item Units	Quantity Sold			Show on Report
		Whole	Partial	Total	
50 lbs of hamburger	200	0	0	0	<input checked="" type="checkbox"/>
pork loin	75	0	0	0	<input checked="" type="checkbox"/>
wine bottle	6	0	0	0	<input checked="" type="checkbox"/>
bottle of rum	64	0	0	0	<input checked="" type="checkbox"/>
burger buns	100	0	0	0	<input checked="" type="checkbox"/>
cheese slices	150	0	0	0	<input checked="" type="checkbox"/>

Linked Item	Sales Unit(s)	Quantity Sold	
		Items	Units
1/4 lb burger	1	0	0
1/2 lb burger	2	0	0
1 lb burger	4	0	0

- This software will allow the user to create a Master Items list of all their PLU items and link up to 5 component items to each of these Master items. The component items are then attached to Raw Purchasing Units. The reports generated reflect the total usage of the Raw Purchasing Units.

Print Preview
Date Printed: 12/21/2004 5:00:33 PM
PLU Report
Page: 1

Machine ID: DenView Store Polled Date: 12/21/2004 9:52:04 AM Reg. No: 0
Store Number: 1 ECR Date: 12/21/2004 Type: X
Machine Number: 1 Z Counter: 0 Area: AREA 1
Polled Register: Stand Alone Register

Code	Name	Link Dept	GS Amount	GS Item
1	salad w/ pork	1	\$325.44	56
2	pork sandwich	1	\$1,487.50	175
3	pork chop dinner	2	\$2,150.25	141
4	hamburger	2	\$726.25	83
5	cheeseburger	3	\$965.25	99
6	ultimate burger	3	\$504.00	48
7	wine bottle	1	\$210.00	10
8	wine carafe	2	\$202.50	15
9	wine glass	2	\$148.00	37
10	venus rum	3	\$46.75	17
11	daiquiri	1	\$108.75	29
12	rum and coke	1	\$136.00	34
Total			7020.69	744

Page 1 of 1

- For example, an item on a PLU report may be 75 Ultimate Burgers. With DenView500 a user can link this PLU item to the following components: 1 lb burger patty, 1 bun, and 2 slices of cheese. Then these component items could be linked to the Raw Purchasing Units of: a 50 lb package of hamburger, a case of buns and a carton of cheese. The report created by DenView500 would show that the store used 1.5 - 50 lb packages of hamburger, 3/4 of a case of buns and 1 carton of cheese.
- DenView500 is a simple, easy-to-use program that allows storeowners to manage their businesses at a fraction of the cost of a high-end inventory module.

Print Preview
75 %
Close

Main
Page 1
Page 1
Page 1
Page 1
Page 1
Page 1

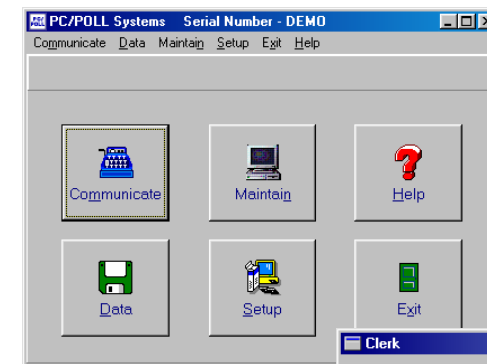
Item Usage Report

Raw Purchasing Unit	Whole Qty Used	Partial Qty Used	Total Qty Used
50 lbs of hamburger	2	121	2,605
Linked Item	Qty Sold (Items)	Qty Sold (Units)	
1/4 lb burger	131	131	
1/2 lb burger	99	198	
1 lb burger	48	192	
pork loin	11	4	11,053
Linked Item	Qty Sold (Items)	Qty Sold (Units)	
1/3 of a chop	56	56	
2/3 of a chop	176	350	
1 whole chop	141	423	
wine bottle	23	4	23,666
Linked Item	Qty Sold (Items)	Qty Sold (Units)	
wine glass	82	82	
wine bottle	10	60	
bottle of rum	7	59	7,921
Linked Item	Qty Sold (Items)	Qty Sold (Units)	
1/2 oz shot	17	17	
1 oz shot	51	102	
2 oz shot	97	389	
burger buns	2	30	2.3
Linked Item	Qty Sold (Items)	Qty Sold (Units)	
1 bun	230	230	
cheese slices	1	45	1.3
Linked Item	Qty Sold (Items)	Qty Sold (Units)	
1 cheese slice	99	99	
2 cheese slices	46	99	

Page 1 of 1

Features of Version 6 Polling

- Save and Send Programs
- Poll Reports
- Communicates direct connect or via modem
- Built in help files
- Users can setup the software to be completely manual to fully automatic using the prompted, script, schedule, and calendar
- Allows users to generate their own end of week and month reports using the consolidate feature
- Allows users to save programs back to their PC from the register, make changes at the PC and then send those changes to the register
- Allows users to take X and Z reports from their PC and save the data for later viewing and easy storage
- Several different report export formats to choose from for interfacing purposes
- Data can be exported from both the report and programming area in comma delimited text file format and select additional formats
- Users can save and edit their keyboard layouts and then send those changes to the register. In addition to the programming, they can also create an overlay with color buttons, color text or icons which can be printed out to place on the register
- Includes options for auto report exporting and printing
- Interfaces with Archive Agent, DenView500, Version 6 Inventory and QuickBooks



Main Screen: This is the main menu screen. From here users can enter the different areas of the program.

Clerk Detail Screen: This is the detail screen of the clerk program. This lets you easily set-up and make changes to the Clerk program.

Clerk

Number: 12
Descriptor: Molly B.
Code: 4348
Drawer Assign: 1

Buttons: OK, Cancel, Print, Help